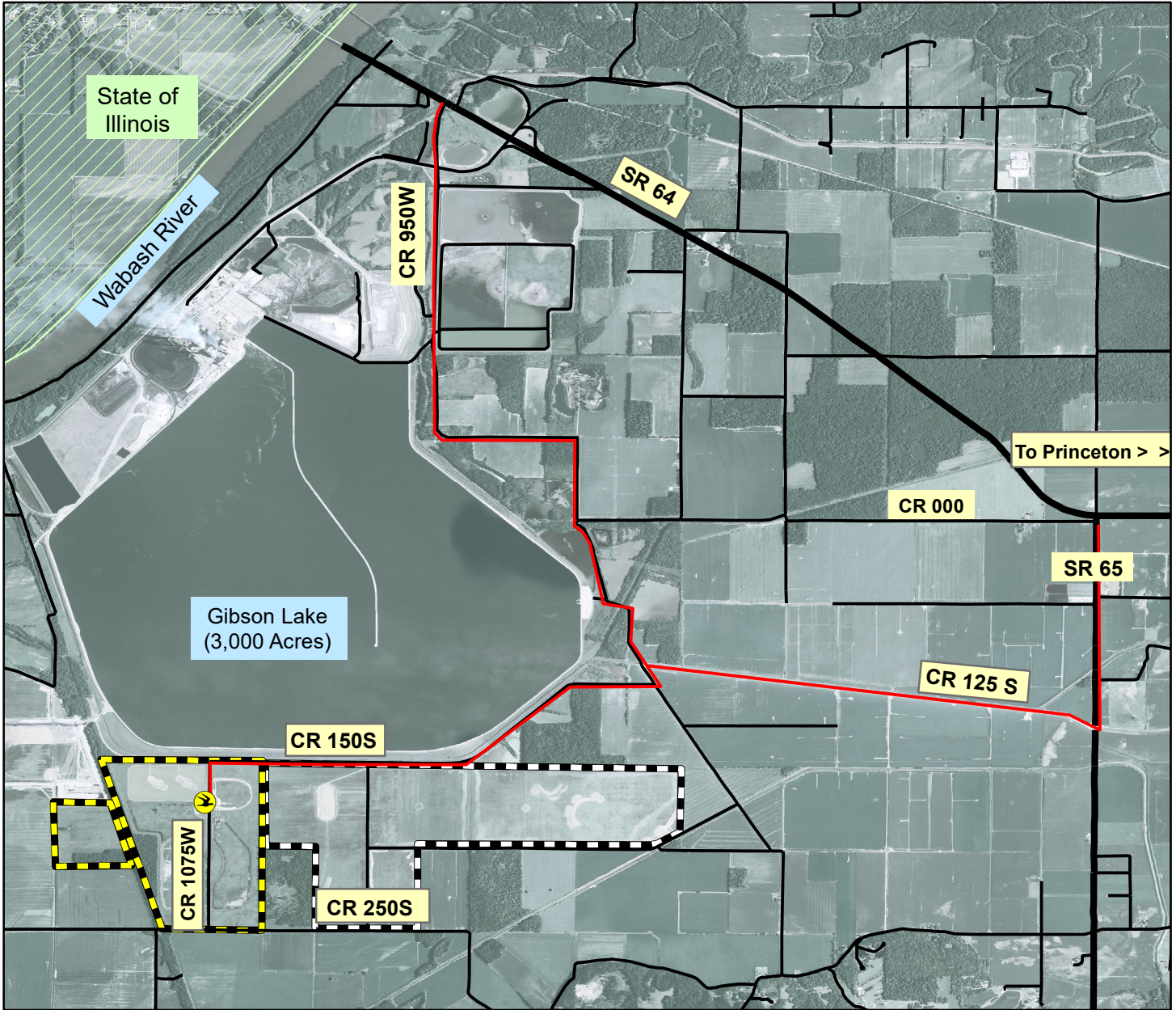




Cane Ridge Wildlife Management Area (WMA)




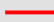




The 466-acre Cane Ridge WMA, a unit of Patoka River NWR is a designated wildlife sanctuary with no hunting or fishing allowed. Wildlife observation and photography is encouraged, **but restricted to public roadways and the observation deck.**

DIRECTIONS:

Turn south off SR 64 onto SR 65, travel about 1.3 miles and turn right on CR 125S (which is on ditch levee). Road comes to a T, turn left and then turn right on CR 150S. Travel to the Observation Deck at Cane Ridge WMA. Total distance is about 6.1 miles.

----OR

Turn south off SR 64 at the blinking traffic light signal onto CR 950W. Turn right on CR 150S and continue to the Observation Deck at Cane Ridge WMA. Distance is about 6.5 miles.

-  Observation Deck
-  Route to Cane Ridge
-  SR (State Road)
-  CR (County Road)
-  Cane Ridge WMA
-  Tern Bar Slough - IDNR

The USFWS makes no warranty for use of this map and cannot be held liable for actions or decisions based on map content.

Patoka River NWR&MA
510 1/2 W Morton St
Oakland City, IN 47660
812 749-3199