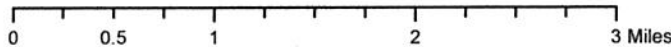
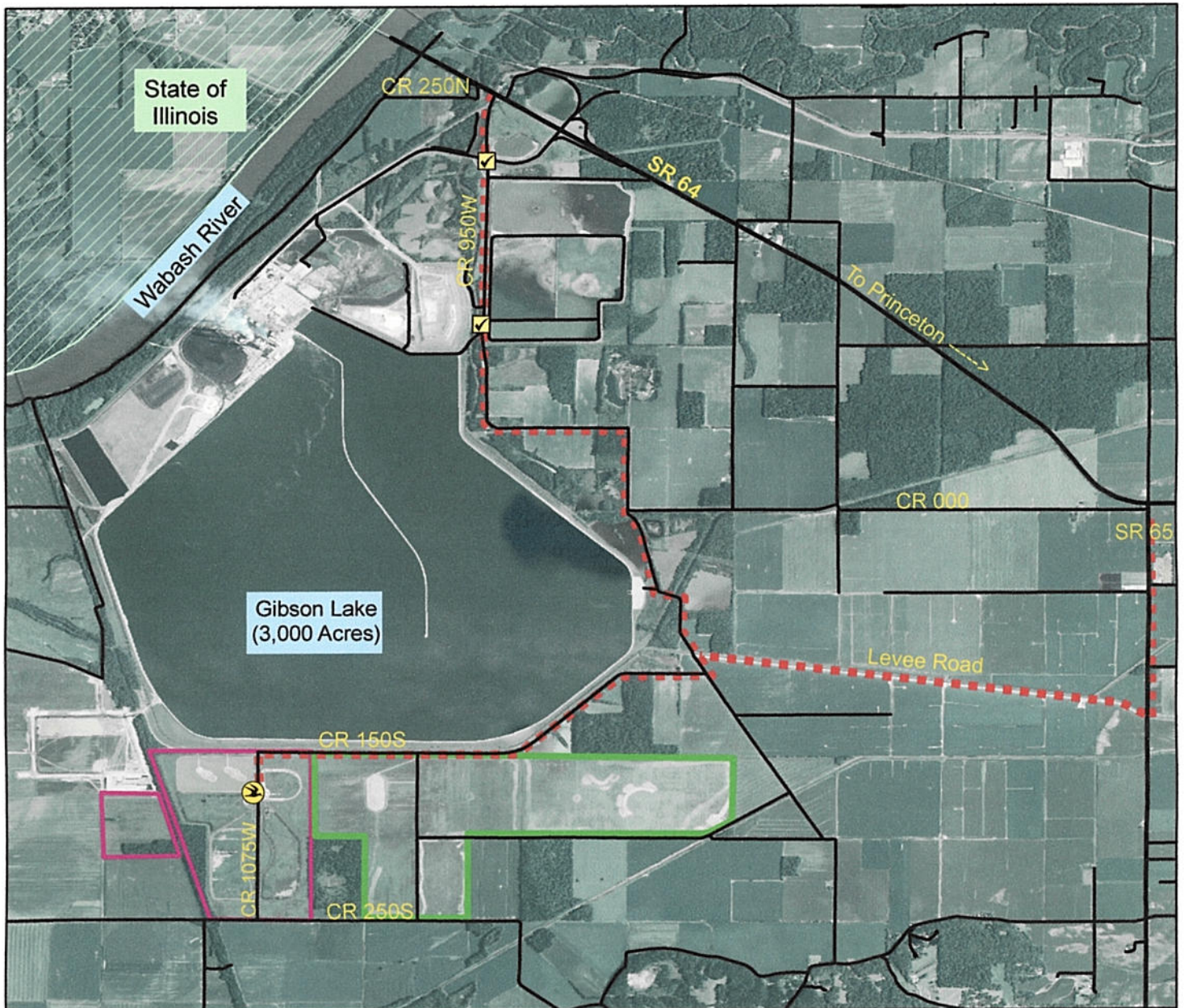


Cane Ridge WMA - How to get there



The 466-acre Cane Ridge WMA, a unit of Patoka River NRW, is a designated wildlife sanctuary with no hunting or fishing allowed. Wildlife observation and photography is encouraged, but restricted to public roadways and the observation deck.



DIRECTIONS:

Turn south off SR 64 onto SR 65, travel about 1.3 miles and turn west on the gravel Levee Road. Drive 4.8 miles to the Observation Deck at Cane Ridge WMA.

-----OR

Turn south off SR 64 at the blinking traffic light signal onto CR 950W. Drive 6.5 miles to the Observation Deck at Cane Ridge WMA.

Legend

- Guard Shack
- Observation Deck
- Route to Cane Ridge
- State Road
- County Road
- Cane Ridge WMA
- Tern Bar Slough Wildlife Diversity Area - IDNR

7 Jan 2009

CR_Route.mdx